

NEQ (North East Quadrant) Euston, London

Development of High End Offices, Residential Apartments and Retail Units



Regent's Place is a 13-acre estate in London's West End on the North East Quadrant of Regent's Place to provide a mixed-use scheme including residential accommodation within The Triton Building. The development has completed Regent's Place, which was set to reach 2 million sq ft of office, retail and residential space.

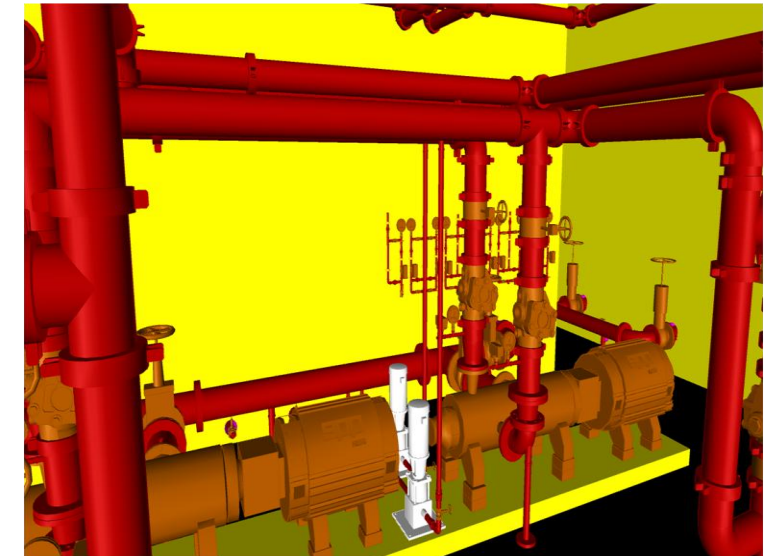
Systems Installed

15 Floor Commercial Building & 25 Floor Residential Tower 200 + Apartments
3 Retail Units
10 Floors CAT A Fit Out

Wet Risers to 3 Cores on the Commercial Building
& 25 Floors of the Residential Tower
90 Zones in Total



8 Floors of Window Sprinklers between Residential & Commercial Buildings
1 No 185M3 Sprinkler Tanks & 2 No 68M3 Hydrant Tanks
2 Electric Motor Driven Hydrant Pumps 24 Bar
2 Electric Motor Driven Hydrant Pumps 20 Bar
2 Multi Stage Electric Motor Driven Sprinkler Pumps

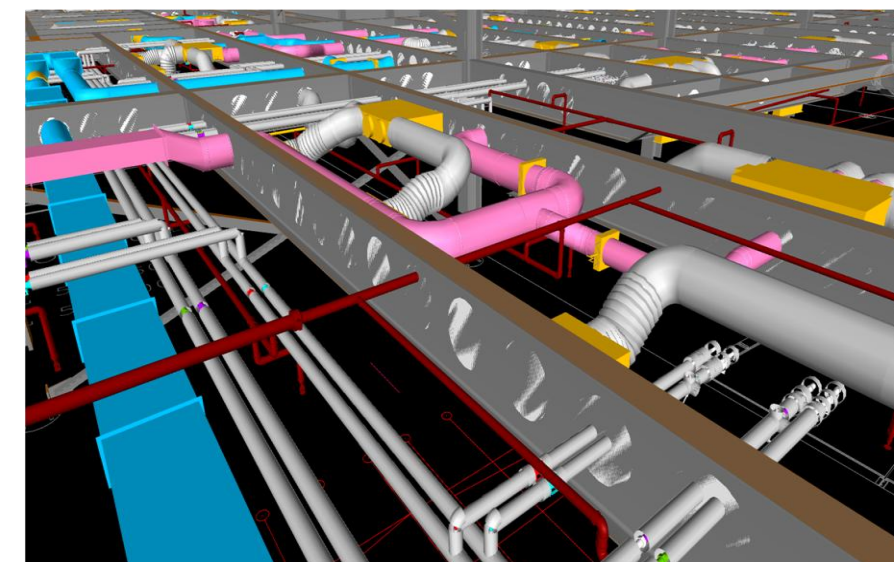


Design

All design works are carried out in-house by our own Design staff/engineers, overseen by our Design Managers. Designs are carried out by qualified engineers who have passed the current LPCB trade examinations.

We utilise the latest 2D and 3D AutoCAD software for coordination resulting in agreed layouts/drawings for construction. These drawings are then calculated using the current LPCB approved hydraulic software to confirm pipe sizes and water supply requirements to fit the system demands and also client specification/Rules and regulations stipulated in the contract.

Close liaison with both Client and our Senior Project managers throughout the programme is vital to our success and smooth running of projects.



3D Coordination drawing As installed showing 6th floor.

Client : British Land
Contract Managed by: Lend Lease
Value : £2.3m
Complete March 2013