

London Wall Place 1 and 2, London

Development of Two Complementary Office Buildings



The Project

London Wall Place will feature two complementary yet distinctive office buildings supplemented by over an acre of public realm in the City of London.

1 London Wall Place will provide 12 stories including accessible outdoor terraces with striking views towards St. Paul's Cathedral. 1 London Wall Place has been pre-let to Schrodgers, one of the world's leading asset management companies.

2 London Wall Place will be a 16-story building providing commercial space which will also offer spectacular views across the City.

London Wall Place has been designed to enable half of the site to be dedicated to open space. This creates a series of new gardens set amongst the historic monuments including the Roman City Wall and St Alphage Church Tower remains.



Systems being Installed

LWP 1

2 Basements, Ground + 12 floors of Shell & Core

1500 – Sprinkler Heads

56 – Zone Valves

2 – Multi-Stage Electric Motor Driven Fire Pumps

2 – Sprinkler Water Storage Tanks

2 – Dry Risers



LWP 2.

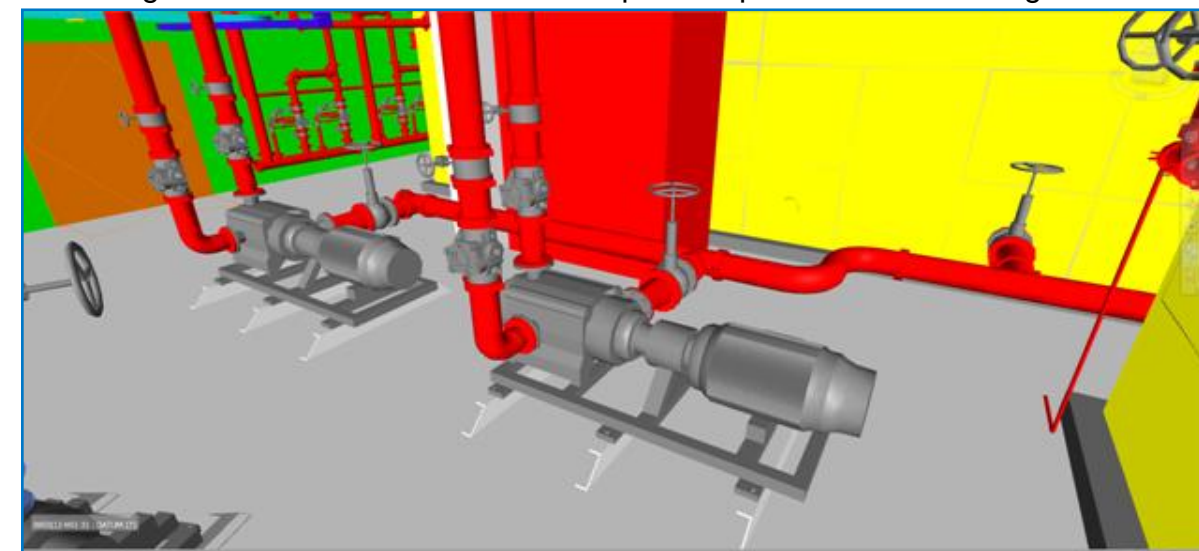
2 Basements, Ground + 16 Floors of Shell & Core + Cat A Fit Out

6400 – Sprinkler Heads

50 - Zone Valves

200 – Window Drenchers

2 – Multi-Stage Electric Motor Driven Fire Pumps 2 – Sprinkler Water Storage Tanks

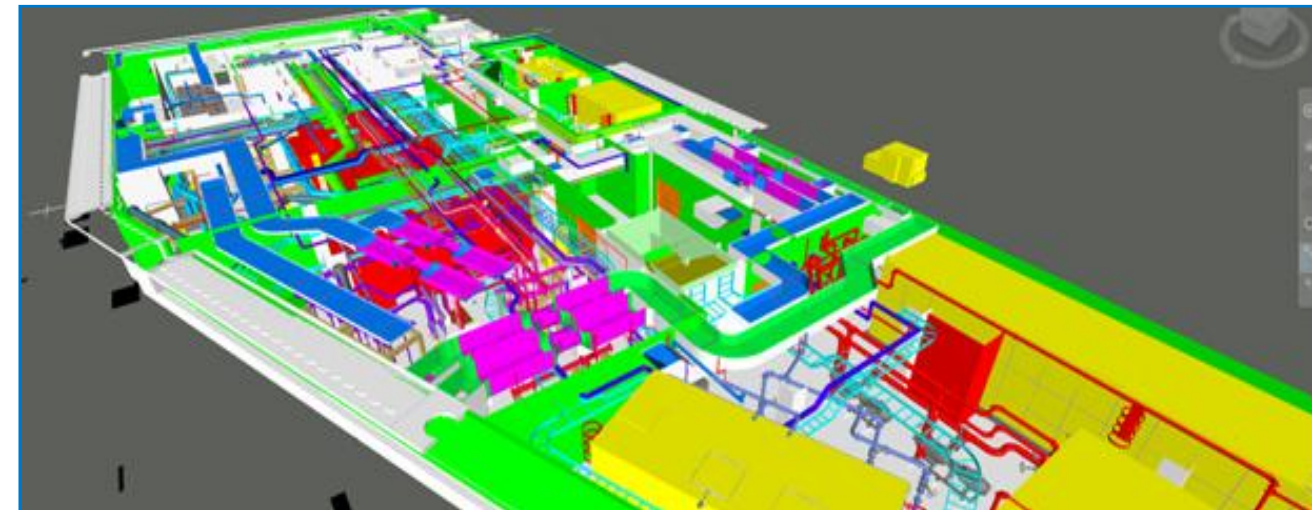


Wet Riser Installation

- 2 – Multi-Stage Electric Motor Driven Wet Riser Pumps
- 2 – Wet Riser Water Storage Tanks



Automatic Fire Sprinkler System **BS EN 12845** with life safety enhancements.
Wet and Dry Risers systems to **BS 9990:2006**.



Client : Brookfield Multiplex Construction Europe

Value : £1.89 Million

Completion: 2017 (In Progress)